



Part Numbers: TTU-BGP14 & TTU-BGB14

Grille Hardware Bag Contents

Item #	Quantity	Description
1	6	U-Nuts
2	8	#10 Screws
3	2	#8 Screws
4	2	2" Flange Brackets
5	2	Top Plate Extension Brackets (LH/RH)
6	2	Middle Extension Brackets (LH/RH)
7	2	Bottom Extension Brackets (LH/RH)
8	4	1" X 3/16" Flat Washer
9	3	3/16" Black PVC Tube
10	2	10/32" Nylon Lock Nuts

Recommended Tools

Safety Tools	
Safety Glasses	
Electrical Tape	
Installation Tools	
10mm Wrench	
Phillips Screw Driver	
Pliers	
Special Chemicals	

Conflicts

TRD Pro Series

STOP: Damage to the vehicle may occur. Do not proceed until process has been complied with.

OPERATOR SAFETY: Use caution to avoid risk of injury

CRITICAL PROCESS: Proceed with caution to ensure a quality installation. These points will be audited on a completed vehicle installation

TOOLS & EQUIPMENT: This calls out the specific tools and equipment required for this process

REVISION MARK: This mark highlights a change in installation with respect to previous issue.

SPECIAL NOTE:
 After **Auer Automotive Safety** mandated preparatory steps have been taken, the installation sequence is the suggested method for completing the accessory installation. In some instances the suggested sequence is written for one associate to install and in others the sequence is given as part of a team accessory installation. Unless otherwise stated in the document, the associates may perform the installation steps in any order to make the installation as efficient as possible while maintaining consistent quality. Also some items listed to be removed may not need to be removed if caution is taken to not damage vehicle.

Care must be taken when installing this accessory to ensure damage does not occur to the vehicle. The installation of this accessory should follow approved guidelines to ensure quality installation.

Vehicle Disassembly

1. From underneath the hood remove two plastic fasteners from the factory grille located inside of the headlamps with a nylon fastener tool (picture 1).



Picture 1

2. Remove four 10mm bolts from the plastic radiator cover then pull the radiator cover upward to remove (picture 2)



Picture 2

3. Pull the top of the factory grille slightly forward a couple of inches, reach down behind the factory grille and press on two plastic latches located on the bottom and ends of the factory grille (picture 3) while

pulling the bottom of the factory grille forward, remove the factory grille from the vehicle (Picture 3A).



Picture 3



Picture 3A

4. Place the factory grille face down on a clean soft surface (take special care to protect the chrome factory shell). On the back of the grille assembly use a Phillips screwdriver to remove two Phillips screws from each side of the factory grille: 4 total (picture 4)



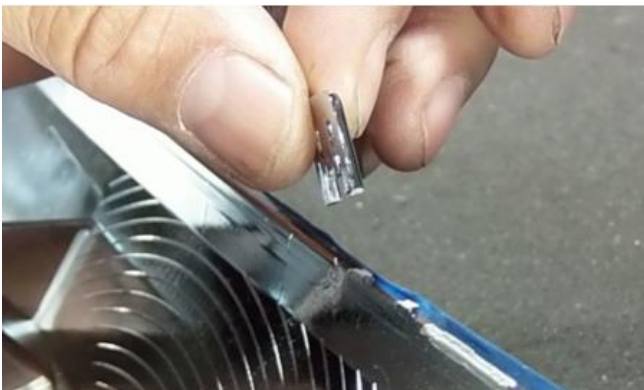
Picture 4

5. Now remove the black plastic grille insert from the factory grille shell by unlatching thirteen plastic latches around the grille with a flat screwdriver and remove the black plastic grille insert (picture 5)



Picture 5

6. With a pair of pliers break off all thirteen clips from chrome plastic frame, this will allow your billet grille to sit flush with the chrome frame during installation (picture 6)



Picture 6

7. Use a nylon fastener tool to remove two plastic fasteners located just below the inside bottom corner of each headlamp (picture 7). Save these fasteners, as you will use them later in the installation.

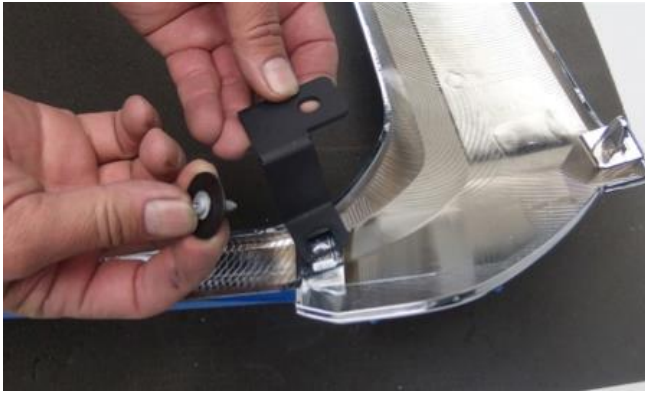


Picture 7

8. Remove the factory Toyota logo from the factory grille by pressing the tabs on the back of the logo inward while pulling the logo forward

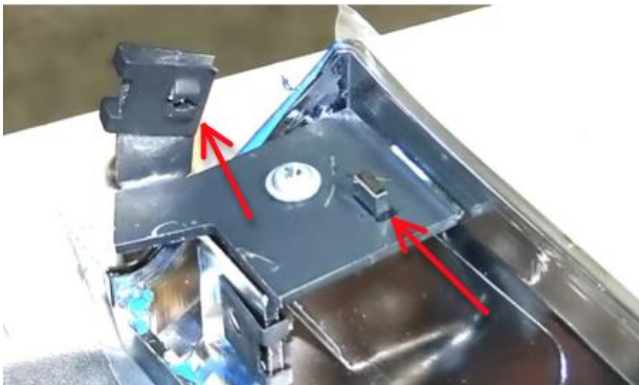
Billet Grille Installation

9. Take the two Z support brackets and install them on backside of the factory grille shell with the arm bending downward as shown (picture 8). Use the factory screws removed in Step 4 along with one 1" black fender washer on each bracket to secure the bracket to the factory grille shell. Repeat this on the opposite side of the factory grille. Tighten the two screws.



Picture 8

10. Take the two top plate extension brackets and install them on the upper corners of the factory grille shell using the factory screws to secure them to the grille shell and install the u-nuts onto the arms of the brackets as shown in (picture 9). Insure the u-nut is oriented with the side that accepts the screw facing outward as shown.



Picture 9

11. Reinstall the factory chrome grille shell (with the brackets installed) on the vehicle, make sure the brackets slide under the black plastic arms on the core support (picture 10) and that the holes in the u-nut and bracket line up with the hole in the plastic bracket on the core support.



Picture 10

12. Reach down behind the factory grille and locate the brackets that you installed on step 7 and insert the factory plastic fastener through the hole in the bracket and into the same hole in the vehicle it was removed from (picture 11). Make sure the fastener is fully inserted and secure.



Picture 11

13. Take the two bottom extension brackets and install u-nuts onto the small ends aligning with the holes in the brackets and orient it as shown (picture 12).



Picture 12

14. Install two u-nuts onto the two flange brackets aligning the holes in the u-nuts with the holes in the flange brackets and orient it as shown (picture 13).



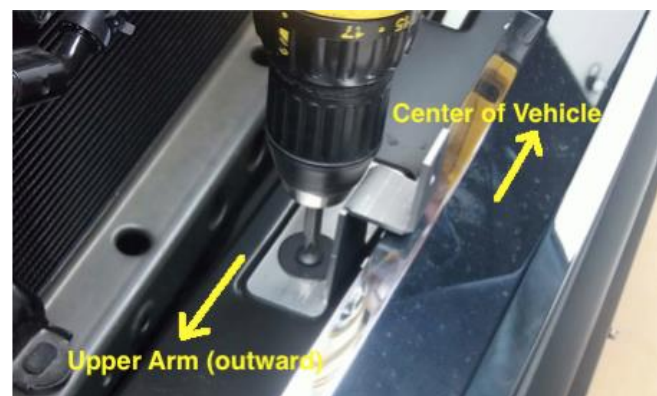
Picture 13

15. Take the two flange brackets (with the u-nuts installed) and attach them onto the large ends of the bottom extension brackets with one #8X3/4" screw and one 1" black fender washer. You will only need to screw the threads in a couple of turns as you want the flange brackets to have some space between them and the bottom extension bracket. You will have two assembled bottom extension brackets (picture 14).



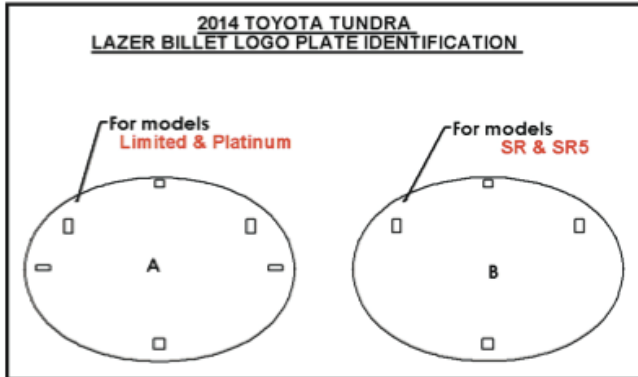
Picture 14

16. Take the two bottom extension brackets and install them down behind the factory grille shell onto the black metal bumper plate with rectangular holes. The longer side of the brackets base will install toward the center of the vehicle and the upper arms will be toward the outside of the vehicle (picture 15). The flange brackets will drop through the rectangular holes and grab the lip on the bottom of the rectangular hole when secured. Tighten the screws on the flange brackets to secure the brackets to the metal bumper plate. Test fit the Billet in the chrome shell opening to make sure the holes in the bracket arms and the holes in the mounting plates on the bottom back of the Billet align correctly.



Picture 15

17. Select the correct logo plate before installing. For Limited & Platinum edition use Logo (A), for SR & SR5 edition use Logo (B). See diagram below (picture 16)



Picture 16

18. Install the factory logo onto the logo plate, the tabs on the back of the logo insert through the holes in the front of the logo plate. Insert the bottom tab first and then the three top tabs, make sure the tabs latch on the back of the logo plate (picture 17). Slide the pvc tube down over the plastic latches of the factory logo on the back of the logo plate to secure the logo to the plate (picture 17A). Place the threaded studs on the logo plate through the billet bars and the tabs on the back of the Billet. Secure the plate with two 10/32" nylon lock nuts.



Picture 17



Picture 17A

19. Take the billet grille and place it into the chrome factory grille shell. Take six #10 screws and secure the top plate to the vehicle by inserting the screws through the six holes in the top plate and tighten (picture 18).



Picture 18

20. Insert two #10 screws through the billet bars at the bottom of the billet grille, through the mounting plates with holes in them on the back of the Billet and into the bottom extension brackets and tighten (picture 19).



Picture 19

Check

Accessory Functions Checks

Alignment of Grille.....

Wipe grille to remove marks.....

Look For:

- Loose hardware
- General appearance of grille.

VEHICLE FUNCTION CHECK

AFTER ALL PANELS, COVERS AND COMPONENTS THAT WERE REMOVED HAVE BEEN REINSTALLED, TEST THOROUGHLY ALL MECHANICAL AND ELECTRICAL COMPONENTS DISCONNECTED AND/OR REMOVED FROM THE VEHICLE DURING THE INSTALLATION OF THIS ACCESSORY